



THE SOCIAL INVESTMENT FUND (SIF)



**THE INTEGRATED RURAL DEVELOPMENT PROJECT (IRDP)
CATALOGUE OF COMPLETED SOCIO-ECONOMIC INFRASTRUCTURE
THUS FAR....**



APRIL 2021



THE SOCIAL INVESTMENT FUND (SIF)

P. O. BOX CT3919, CANTONMENTS, ACCRA

TEL.: 0302 778920 -3

FAX: 0302 778404

MOBILE: +233-243690350

EMAIL: info@sifinghana.org

WEBSITE: www.sifinghana.org

DEVELOPMENT PARTNERS





ASHANTI



REGION





CONSTRUCTION OF HEALTH FACILITIES



NURSES' QUARTERS WITH MECHANIZED BOREHOLE AT ADWUMAKAASEKESE, AFIGYA KWABRE DISTRICT



**MECHANIZED BOREHOLE ATTACHED TO THE NURSES' QUARTERS AT
ADWUMAKAASEKESE, AFIGYA KWABRE DISTRICT**



RURAL CLINIC WITH MECHANIZED BOREHOLE AT ADUBINSOKESE, AFIGYA KWABRE DISTRICT



RURAL CLINIC WITH MECHANIZED BOREHOLE AT ADUBINSOKESE – CONTINUED, AFIGYA KWABRE DISTRICT



MECHANIZED BOREHOLE ATTACHED TO THE RURAL CLINIC AT ADUBINSOKESE, AFIGYA KWABRE DISTRICT



RURAL CLINIC WITH MECHANIZED BOREHOLE AT NKWANTAKESE, AFIGYA KWABRE DISTRICT



MECHANIZED BOREHOLE ATTACHED TO THE RURAL CLINIC AT NKWANTAKESE, AFIGYA KWABRE DISTRICT



RURAL CLINIC WITH MECHANIZED BOREHOLE AT WUROMSO, AHAFO ANO SOUTH DISTRICT



MECHANIZED BOREHOLE ATTACHED TO THE RURAL CLINIC AT WUROMSO, AHAFO ANO SOUTH DISTRICT



MATERNITY CENTER WITH MECHANIZED BOREHOLE AT MEHAME, AHAFO ANO SOUTH DISTRICT



MECHANIZED BOREHOLE ATTACHED TO THE MATERNITY CENTER AT MEHAME, AHAFO ANO SOUTH DISTRICT



MATERNITY CENTER WITH MECHANIZED BOREHOLE AT FAWOMAN, AHAFO ANO SOUTH DISTRICT



MECHANIZED BOREHOLE ATTACHED TO THE MATERNITY CENTER AT FAWOMAN, AHAFO ANO SOUTH DISTRICT



NURSES' QUARTERS WITH MECHANIZED BOREHOLE AT SABRONUM, AHAFO ANO SOUTH DISTRICT



MECHANIZED BOREHOLE ATTACHED TO THE NURSES' QUARTERS AT SABRONUM, AHAFO ANO SOUTH DISTRICT



RURAL CLINIC WITH MECHANIZED BOREHOLE AT KUNSU CAMP, AHAFO ANO SOUTH DISTRICT



MECHANIZED BOREHOLE ATTACHED TO THE RURAL CLINIC AT KUNSU CAMP, AHAFO ANO SOUTH DISTRICT

A group of young children, likely students, are gathered in front of a newly constructed school building. They are smiling and have their hands raised in the air, suggesting excitement and joy. The school building has a red roof and light-colored walls with blue accents. The scene is set outdoors on a bright day.

CONSTRUCTION OF EDUCATIONAL FACILITIES

10/21/2018



TEACHERS' QUARTERS WITH MECHANISED BOREHOLE AT HEMAN, AFIGYA KWABRE DISTRICT



MECHANIZED BOREHOLE ATTACHED TO THE TEACHERS' QUARTERS AT HEMAN, AFIGYA KWABRE DISTRICT



TEACHERS' QUARTERS WITH MECHANIZED BOREHOLE AT ABIDJAN, AFIGYA KWABRE DISTRICT



TEACHERS' QUARTERS WITH MECHANIZED BOREHOLE AT ABIDJAN - CONTINUED, AFIGYA KWABRE DISTRICT



MECHANIZED BOREHOLE ATTACHED TO THE TEACHERS' QUARTERS AT ABIDJAN, AFIGYA KWABRE DISTRICT



10/18/2018

6-UNIT CLASSROOM BLOCK WITH 8-SEATER LATRINE AT AHENKRO, AFIGYA KWABRE DISTRICT



8-SEATER LATRINE ATTACHED TO THE 6-UNIT CLASSROOM BLOCK AT AHENKRO, AFIGYA KWABRE DISTRICT



6-UNIT CLASSROOM BLOCK WITH 8-SEATER LATRINE AT TETREM, AFIGYA KWABRE DISTRICT



8-SEATER LATRINE ATTACHED TO THE 6-UNIT CLASSROOM BLOCK AT TETREM, AFIGYA KWABRE DISTRICT



6-UNIT CLASSROOM BLOCK WITH 8-SEATER LATRINE AT SABRONUM, AHAFO-ANO SOUTH DISTRICT



6-UNIT CLASSROOM BLOCK WITH 8-SEATER LATERINE AT SABRONUM – CONTINUED, AHAFO-ANO SOUTH DISTRICT



8-SEATER LATRINE ATTACHED TO THE 6-UNIT CLASSROOM BLOCK AT SABRONUM, AHAFO-ANO SOUTH DISTRICT



TEACHERS' QUARTERS WITH MECHANIZED BOREHOLE AT ASUKESE, AHAFO-ANO SOUTH DISTRICT



MECHANIZED BOREHOLE ATTACHED TO THE TEACHERS' QUARTERS AT ASUKESE, AHAFO-ANO SOUTH DISTRICT



SCHOOL BLOCK AT WADIE ADUMAKAKESE IN THE KWABRE EAST DISTRICT



SCHOOL BLOCK AT WADIE ADUMAKAKESE IN THE KWABRE EAST DISTRICT



SCHOOL BLOCK AT WADIE ADUMAKAKESE IN THE KWABRE EAST DISTRICT



SCHOOL BLOCK AT WADIE ADUMAKAKESE IN THE KWABRE EAST DISTRICT



6 UNIT CLASSROOM BLOCK AT KASAAM IN THE KWABRE EAST DISTRICT



SIF PROJECT AT WUROMSO IN THE ASUTIFI SOUTH



SIF PROJECT AT WUROMSO IN THE ASUTIFI SOUTH



6-UNIT CLASSROOM BLOCK WITH 8-SEATER LATERINE AT KAGYASE , KUMASI METROPLITAN

A photograph of a community borehole structure. The structure consists of a concrete base with a checkered tile floor leading up to a square concrete frame. On top of the frame is a large, cylindrical, grey water tank. The background shows a clear blue sky with scattered white clouds, some green foliage, and a portion of a building with a red roof on the left. The overall scene is bright and sunny.

CONSTRUCTION OF COMMUNITY BOREHOLES

10/20/2018



10/20/2018

COMMUNITY MECHANIZED BOREHOLE AT WAWASE, AFIGYA KWABRE DISTRICT



COMMUNITY MECHANIZED BOREHOLE AT BIEMSO NO.1, AHAFO-ANO SOUTH DISTRICT

BRONG AHAFO



REGION





CONSTRUCTION OF HEALTH FACILITIES



MATERNITY CENTER WITH MECHANIZED BOREHOLE AT BANTAMA, SENE WEST DISTRICT



RURAL CLINIC WITH MECHANIZED BOREHOLE AT LEMU, SENE WEST DISTRICT



TEACHERS' QUARTERS WITH MECHANIZED BOREHOLE AT TATO BATTOR, SENE WEST DISTRICT



6-UNIT CLASSROOM BLOCK WITH 8-SEATER LATERINE AT KYEAMEKROM, SENE WEST DISTRICT



TEACHERS' QUARTERS WITH MECHANIZED BOREHOLE AT PREMUASE, SENE EAST DISTRICT

A large-scale construction project for a drainage facility. The image shows a concrete structure with two circular openings, likely for pipes or culverts. A sloped channel leads from the top left towards the bottom right, ending in a culvert. The structure is surrounded by dirt and some vegetation in the background.

CONSTRUCTION OF DRAINAGE FACILITIES



CULVERT AT BONINKA, SENE EAST DISTRICT



CULVERT AT GBILI, SENE EAST DISTRICT



CENTRAL



REGION





CONSTRUCTION OF HEALTH FACILITIES



RURAL CLINIC WITH MECHANIZED BOREHOLE AT NKOTOMSO, UPPER DENKYIRA WEST DISTRICT



RURAL CLINIC WITH MECHANIZED BOREHOLE AT AKWABOSO, UPPER DENKYIRA WEST DISTRICT



MECHANIZED BOREHOLE ATTACHED TO THE RURAL CLINIC AT AKWABOSO, UPPER DENKYIRA WEST DISTRICT



A COMMUNITY CLINIC WITH BOREHOLE AT NKOTOMSO IN UPPER DENKYIRA WEST DISTRICT,



MATERNITY HOME WITH MECHANISED BOREHOLE AT AYANFURI, UPPER DENKYIRA WEST DISTRICT



NURSES' QUARTERS WITH POTABLE WATER AT DIASO, UPPER DENKYIRA WEST DISTRICT



NURSES' QUARTERS WITH MECHANIZED BOREHOLE AT ASUADEI, UPPER DENKYIRA WEST DISTRICT



RURAL CLINIC WITH MECHANIZED BOREHOLE AT ENYAN APAA, MFANTSEMAN MUNICIPALITY



2-UNIT SEMI DETACHED NURSES QUARTERS AT NYINAWUSU, UPPER DENKYIRA WEST DISTRICT

A group of young children, likely students, are gathered in front of a newly constructed school building. They are wearing light-colored school uniforms and have their hands raised in the air, smiling broadly. The school building has a red roof and light-colored walls with blue accents. The scene is set outdoors on a grassy area under a clear sky.

CONSTRUCTION OF EDUCATIONAL FACILITIES

10/21/2018



**3-UNIT CLASSROOM BLOCK WITH 4-SEATER LATRINE AT MENSAHKROM,
UPPER DENKYIRA WEST DISTRICT**



**4-SEATER LATRINE ATTACHED TO THE 3-UNIT CLASSROOM BLOCK AT MENSAHKROM,
UPPER DENKYIRA WEST DISTRICT**



**TEACHERS' QUARTERS WITH MECHANIZED BOREHOLE AT NYINAWUSU,
UPPER DENKYIRA WEST DISTRICT**



3-UNIT CLASSROOM BLOCK AT ADEADE, UPPER DENKYIRA WEST DISTRICT



6-UNIT CLASSROOM BLOCK WITH 8-SEATER LATERINE AT AWORODO, MFANTSEMAN MUNICIPALITY



DUADZE TEACHERS QUARTERS

TEACHERS' QUARTERS WITH MECHANIZED BOREHOLE AT DUADZE, MFANTSEMAN MUNICIPALITY



6-UNIT CLASSROOM BLOCK WITH 8-SEATER LATERINE AT EGYIRIFA, MFANTSEMAN MUNICIPALITY



6-UNIT CLASSROOM WITH 8-SEATER LATRINE AT EGYIRIFA – CONT..., MFANTSEMAN MUNICIPALITY



CONSTRUCTION OF MARKETS



YAMORANSA MARKET IN THE MFANTSEMAN DISTRICT





YAMORANSA MARKET IN THE MFANTSEMAN DISTRICT



YAMORANSA MARKET IN THE MFANTSEMAN DISTRICT



YAMORANSA MARKET IN THE MFANTSEMAN DISTRICT



YAMORANSA MARKET IN THE MFANTSEMAN DISTRICT



8-SEATER LATERINE ATTACHED TO THE 6-UNIT CLASSROOM BLOCK AT EGYIRIFA, MFANTSEMAN MUNICIPALITY

A photograph of a community borehole structure. The structure consists of a concrete base with a checkered tile floor leading up to a square concrete frame. On top of the frame is a large, cylindrical, grey water tank. The background shows a cloudy sky, some greenery, and a building with a red roof on the left. The text "CONSTRUCTION OF COMMUNITY BOREHOLES" is overlaid in the center of the image.

CONSTRUCTION OF COMMUNITY BOREHOLES

10/20/2018



COMMUNITY MECHANISED BOREHOLE AT AMOAMAN, UPPER DENKYIRA WEST DISTRICT



EASTERN



REGION





CONSTRUCTION OF HEALTH FACILITIES



**Community Clinic with potable water at Akorwu Bana
In the Upper Manya Krobo District**



Nurses Quarters with potable water at Akateng



Nurses Quarters with potable water at Essuomanya in the Upper Manya Krobo District



RURAL CLINIC WITH MECHANIZED BORHOLE AT AKORWU BANA, UPPER MANYA KROBO DISTRICT



NURSES' QUARTERS WITH MECHANIZED BOREHOLE AT AKATENG, UPPER MANYA KROBO DISTRICT



RURAL CLINIC WITH MECHANIZED BOREHOLE AT BISA, UPPER MANYA KROBO DISTRICT



RURAL CLINIC WITH MECHANIZED BOREHOLE AT ESUOMANYA, UPPER MANYA KROBO DISTRICT



NURSES' QUARTERS WITH POTABLE WATER AT ESSUOMANYA, UPPER MANYA KROBO DISTRICT



MATERNITY CENTRE WITH MECHANIZED BOREHOLE AT AHOMAHUMASO, FANTEAKWA DISTRICT



NURSES' QUARTERS WITH MECHANIZED BOREHOLE AT HEMAN, FANTEAKWA DISTRICT



COMMUNITY CLINIC WITH POTABLE WATER AT KPLANDEY, FANTEAKWA DISTRICT



MATERNITY HOME WITH POTABLE WATER AT AHUMAH, FANTEAKWA DISTRICT



NURSES' QUARTERS WITH POTABLE WATER AT AKATENG, UPPER MANYA KROBO DISTRICT

A group of young children, likely students, are gathered in front of a newly constructed school building. They are wearing light-colored school uniforms and have their hands raised in the air, smiling broadly. The building behind them has a red roof and light-colored walls with blue accents. The scene is bright and sunny, suggesting a positive and hopeful atmosphere.

CONSTRUCTION OF EDUCATIONAL FACILITIES

10/21/2018



TEACHERS' QUARTERS WITH POTABLE WATER AT MEYIWA BUSANKOR, FANTEAKWA DISTRICT

A large-scale construction project for a drainage facility. The image shows a concrete structure with two circular openings, likely for pipes or culverts. A sloped channel leads from the top left towards the bottom right, ending in a culvert. The structure is surrounded by dirt and some vegetation in the background.

CONSTRUCTION OF DRAINAGE FACILITIES



CULVERT AT BEGORO, FANTEAKWA DISTRICT



GREATER ACCRA

10/21/2018



REGION

10/20/2018



CONSTRUCTION OF HEALTH FACILITIES



NURSES' QUARTERS WITH MECHANIZED BOREHOLE AT ABOKOBI, GA EAST MUNICIPALITY



RURAL CLINIC WITH MECHANIZED BOREHOLE AT HAATSO BOI, GA EAST MUNICIPALITY

A group of diverse children, mostly of African descent, are gathered in front of a newly constructed school building. They are wearing school uniforms, including white shirts with green accents and white headwraps. Many of the children have their hands raised in the air, and they are all smiling broadly, conveying a sense of joy and excitement. The school building behind them is a single-story structure with a red metal roof, white walls, and blue accents around the windows and doors. The scene is set outdoors on a bright day with a clear sky.

CONSTRUCTION OF EDUCATIONAL FACILITIES

10/21/2018



TEACHERS' QUARTERS WITH MECHANIZED BOREHOLE AT DANFA, GA EAST MUNICIPALITY



TEACHERS' QUARTERS WITH MECHANIZED BOREHOLE AT ADENKREBI, GA EAST MUNICIPALITY



6-UNIT CLASSROOM BLOCK WITH 8-SEATER LATERINE AT AYI MENSAH, GA EAST MUNICIPALITY



6-UNIT CLASSROOM BLOCK WITH 8-SEATER LATERINE AT HAATSO PAPA0, GA EAST MUNICIPALITY

A large concrete drainage structure under construction. The structure consists of a wide, shallow channel on the left that slopes down to a culvert on the right. The culvert has two circular openings. The concrete is a light grey color and appears to be freshly poured or recently finished. The background shows a dirt area with some dry grass and trees in the distance.

CONSTRUCTION OF DRAINAGE FACILITIES



DOUBLE CULVERT AT PANTANG EAST, GA EAST MUNICIPALITY



DOUBLE CULVERT AT ASHONGMAN-PURE WATER, GA EAST MUNICIPALITY



NORTHERN



REGION





CONSTRUCTION OF HEALTH FACILITIES



NURSES' QUARTERS WITH MECHANIZED BOREHOLE AT BUNKPURUGU, BUNKPURUGU-YUNYOO DISTRICT



MATERNITY CENTER WITH MECHANIZED BOREHOLE AT NASUAN, BUNKPURUGU-YUNYOO DISTRICT



MATERNITY CENTER WITH MECHANIZED BOREHOLE AT GBUNGBALIGA, NANUMBA SOUTH DISTRICT



NURSES' QUARTERS WITH MECHANIZED BOREHOLE AT JUALI, NANUMBA SOUTH DISTRICT

A group of young children, likely students, are gathered in front of a newly constructed school building. They are wearing light-colored school uniforms and have their hands raised in the air, smiling broadly. The school building has a red roof and light-colored walls with blue accents. The scene is set outdoors on a grassy area under a bright sky.

CONSTRUCTION OF EDUCATIONAL FACILITIES

10/21/2018



TEACHERS' QUARTERS WITH MECHANIZED BOREHOLE AT KAMBATIAK, BUNKPURUGU-YUNYOO DISTRICT



6-UNIT CLASSROOM BLOCK AT KPERIGA, WEST MAMPRUSI MUNICIPALITY



3-BEDROOM TEACHERS' QUARTERS AT KPERIGA, WEST MAMPRUSI MUNICIPALITY



A CULVERT AT KPENTAUNG, BUNKPURUGU-YUNYOO DISTRICT

UPPER WEST



REGION





CONSTRUCTION OF HEALTH FACILITIES



NURSES' QUARTERS WITH MECHANIZED BOREHOLE AT WECHIAU, WA WEST DISTRICT



MATERNITY HOME WITH MECHANIZED BOREHOLE AT DORIMON, WA WEST DISTRICT



RURAL CLINIC WITH MECHANIZED BOREHOLE AT KUKPALI, WA WEST DISTRICT



NURSES' QUARTERS WITH MECHANIZED BOREHOLE AT TUMU, SISSALA EAST DISTRICT



RURAL CLINIC WITH MECHANIZED BOREHOLE AT CHALLU, SISSALA EAST DISTRICT



MATERNITY HOME WITH MECHANIZED BOREHOLE AT KASSANA, SISSALA EAST DISTRICT



COMMUNITY AMBULANCE FOR THE MATERNITY HOMES AT KASSANA, SISSALA EAST DISTRICT



MATERNITY BLOCK AT NAKONG, KASSANA NANKANA WEST DISTRICT



CLINIC AT MIRIGU, KASSANA NANKANA WEST REGION

A group of young children, likely students, are gathered in front of a newly constructed school building. They are wearing light-colored school uniforms and have their hands raised in the air, smiling joyfully. The school building has a red roof and light-colored walls with blue accents. The scene is set outdoors on a grassy area under a bright sky.

CONSTRUCTION OF EDUCATIONAL FACILITIES

10/21/2018



6-UNIT CLASSROOM BLOCK WITH 8-SEATER LATRINE AT WECHIAU, WA WEST DISTRICT



URINAL ATTACHED TO THE 6-UNIT CLASSROOM BLOCK AT WECHIAU, WA WEST DISTRICT



8-SEATER KVIP ATTACHED TO THE 6-UNIT CLASSROOM BLOCK AT WECHIAU, WA WEST DISTRICT



TEACHERS' QUARTERS WITH MECHANIZED BOREHOLE AT GBACHE, WA WEST DISTRICT



TEACHERS' QUARTERS WITH MECHANIZED BOREHOLE AT BANDEI, SISSALA EAST DISTRICT



TEACHERS' QUARTERS WITH MECHANIZED BOREHOLE AT BICHEMBOI, SISSALA EAST DISTRICT



3-UNIT CLASSROOM BLOCK WITH URINAL AND 4-SEATER LATRINE AT KUROBOI, SISSALA EAST DISTRICT



3-UNIT CLASSROOM BLOCK WITH URINAL AND 4-SEATER LATRINE AT TARSAW /KULFUO, SISSALA EAST DISTRICT



4-SEATER LATRINE ATTACHED TO THE 3-UNIT CLASSROOM BLOCK AT TARSAW /KULFUO, SISSALA EAST DISTRICT



URINAL ATTACHED TO THE 3-UNIT CLASSROOM BLOCK AT TARSAW /KULFUO, SISSALA EAST DISTRICT



TEACHERS' QUARTERS AT SIRIGU, KASSANA NANKANA WEST DISTRICT

A large-scale construction project for a drainage facility. The image shows a concrete structure with two circular openings, likely for pipes or culverts. A sloped channel leads from the top left towards the bottom right, ending in a culvert. The structure is surrounded by dirt and some vegetation in the background.

CONSTRUCTION OF DRAINAGE FACILITIES



SIMPLE CULVERT AT METTEW, WA WEST DISTRICT



VOLTA



REGION





CONSTRUCTION OF HEALTH FACILITIES



RURAL CLINIC WITH MECHANIZED BOREHOLE AT VANE AVATIME, HO WEST DISTRICT



MATERNITY HOME WITH MECHANIZED BOREHOLE AT VANE AVATIME, HO WEST DISTRICT



MATERNITY HOME WITH MECHANIZED BOREHOLE AT ABUTIA KISSIFLUI, HO WEST DISTRICT



NURSES' QUARTERS WITH MECHANIZED BOREHOLE AT ABUTIA KISSIFLUI, HO WEST DISTRICT



NURSES' QUARTERS WITH MECHANIZED BOREHOLE AT ASHANTI KPOETA, HO WEST DISTRICT



NURSES' QUARTERS WITH POTABLE WATER AT KPASSA, NKWANTA NORTH DISTRICT



NURSES' QUARTERS WITH POTABLE WATER AT AZUA, NKWANTA NORTH DISTRICT



MATERNITY HOME WITH POTABLE WATER AT AZUA, NKWANTA NORTH DISTRICT

A group of young children, likely students, are gathered in front of a newly constructed school building. They are wearing light-colored school uniforms and have their hands raised in the air, smiling joyfully. The school building has a red roof and light-colored walls with blue accents. The scene is set outdoors on a grassy area under a bright sky.

CONSTRUCTION OF EDUCATIONAL FACILITIES

10/21/2018



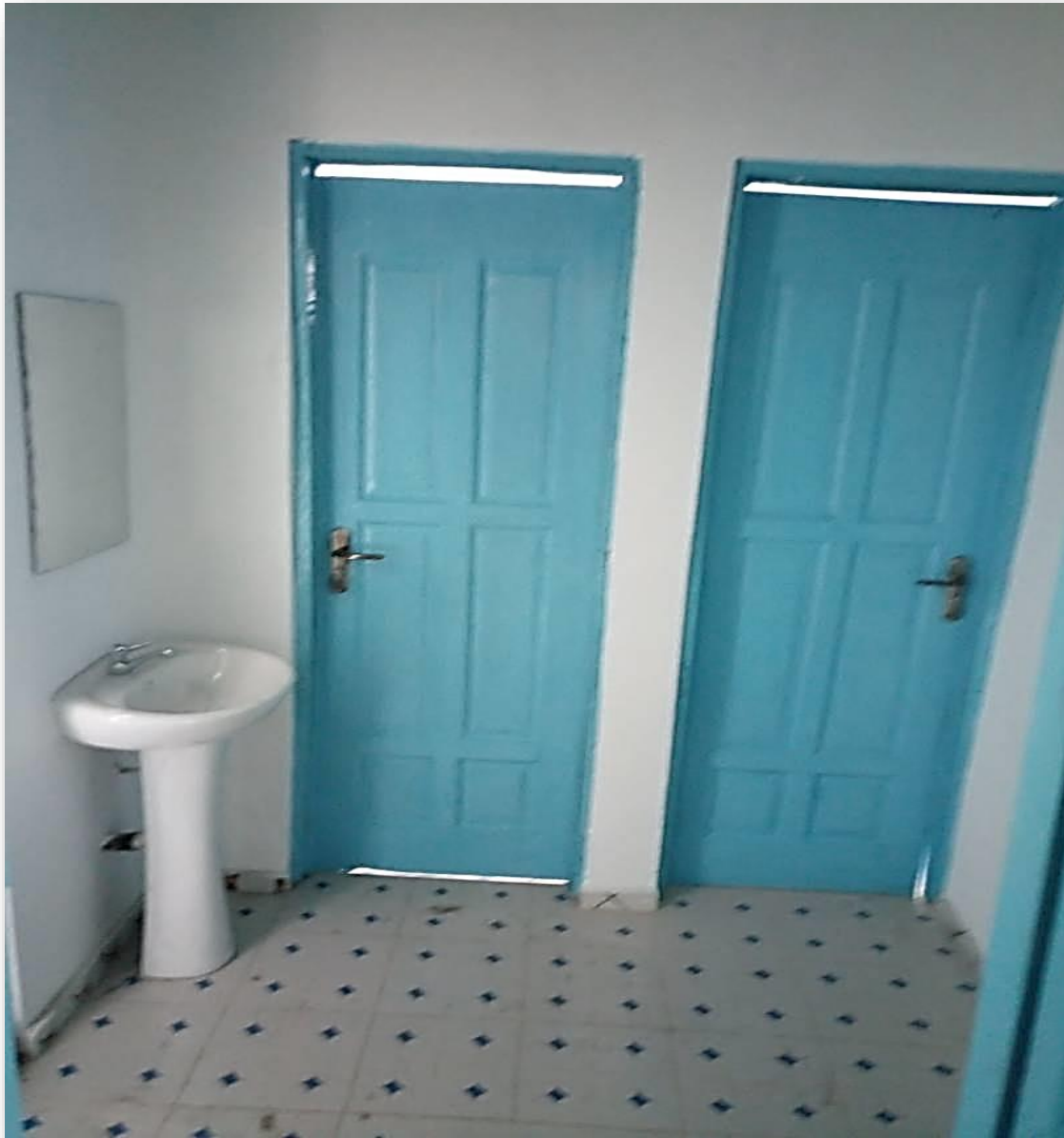
6-UNIT CLASSROOM BLOCK WITH 8-SEATER LATRINE AT TSITO, HO WEST DISTRICT



8-SEATER KVIP ATTACHED TO THE 6-UNIT CLASSROOM BLOCK AT TSITO, HO WEST DISTRICT



TEACHERS' QUARTERS WITH MECHANIZED BOREHOLE AT ANFOETA KYEBI, HO WEST DISTRICT



TEACHERS' QUARTERS WITH MECHANIZED BOREHOLE AT ANFOETA KYEBI-CONT..., HO WEST DISTRICT



SIX-UNIT CLASSROOM BLOCK WITH 8-SEATER LATRINE AT NABU, NKWANTA NORTH DISTRICT



TEACHERS' QUARTERS WITH POTABLE WATER AT NABU, NKWANTA NORTH DISTRICT

A photograph of a community borehole structure. The structure consists of a concrete base with a checkered tile floor leading up to a square concrete frame. On top of the frame is a large, cylindrical, grey water tank. The background shows a clear blue sky with scattered white clouds, some green foliage, and a portion of a building with a red roof on the left. The overall scene is bright and sunny.

CONSTRUCTION OF COMMUNITY BOREHOLES

10/20/2018



COMMUNITY MECHANIZED BOREHOLE AT DZOLO GBORGAME TORGODO, HO WEST



COMMUNITY MECHANIZED BOREHOLE AT SIBI CENTRAL, NKWANTA NORTH DISTRICT

A large-scale construction project for a drainage facility. The structure is made of grey concrete and features two circular openings in the upper section. A wide, sloped channel leads from the left towards the right, where it connects to a culvert. The surrounding area is a mix of dirt and sparse vegetation. The text "CONSTRUCTION OF DRAINAGE FACILITIES" is overlaid in the center of the image.

CONSTRUCTION OF DRAINAGE FACILITIES



U-DRAIN AT AKOME, HO WEST DISTRICT



BOX CULVERT AT ABUTIA AGORTIVE, HO WEST DISTRICT



WESTERN



REGION





CONSTRUCTION OF HEALTH FACILITIES



2-UNIT NURSES' WITH MECHANIZED BOREHOLE QUARTERS AT AMOAKU, WASSA AMENFI WEST MUNICIPALITY



2-UNIT NURSES QUARTERS WITH MECHANIZED BOREHOLE AT GWIRA BANSO, NZEMA EAST MUNICIPALITY



2-UNIT NURSES QUARTERS WITH MECHANIZED BOREHOLE AT GWIRA ESHIEM, NZEMA EAST MUNICIPALITY

A group of diverse children, mostly of African descent, are gathered in front of a newly constructed school building. They are wearing school uniforms, including white shirts with green accents and white headwraps. Many of the children have their hands raised in the air, and they are all smiling broadly, conveying a sense of joy and excitement. The school building behind them has a red roof and light-colored walls with blue accents around the windows and doors. The scene is set outdoors on a bright day with a clear sky.

CONSTRUCTION OF EDUCATIONAL FACILITIES

10/21/2018



TEACHERS' QUARTERS AT AMOAKU, WASSA AMENFI WEST MUNICIPALITY



6-UNIT CLASSROOM BLOCK WITH 8-SEATER LATERINE AT ASANKRAGUA, WASSA AMENFI WEST MUNICIPALITY



8-SEATER LATERINE ATTACHED TO THE 6-UNIT CLASSROOM BLOCK AT ASANKRAGUA, WASSA AMENFI WEST MUNICIPALITY

A photograph of a community borehole structure. The structure consists of a concrete base with a checkered tile floor leading up to a square concrete frame. On top of the frame is a large, cylindrical, grey water tank. The background shows a clear blue sky with scattered white clouds, some green foliage, and a portion of a building with a red roof on the left. The overall scene is bright and sunny.

CONSTRUCTION OF COMMUNITY BOREHOLES

10/20/2018



COMMUNITY MECHANIZED BOREHOLE AT NKENKENSO, AMENFI WEST MUNICIPALITY

The image shows a large-scale construction project for a market building. The structure is a long, single-story building with a green corrugated metal roof. The walls are painted in two colors: white on the upper portion and a light blue on the lower portion. The building is currently under construction, with visible rebar protruding from the roof and some structural elements still being completed. The building is situated on a paved area, and the surrounding landscape is a mix of green grass and dirt. In the background, there are trees and a hillside. The text "CONSTRUCTION OF MARKETS" is overlaid in the center of the image.

CONSTRUCTION OF MARKETS



15-UNIT LOCKABLE STORES AT ASANKRAGUA, AMENFI WEST MUNICIPALITY



STALLS ATTACHED TO THE MARKET AT ASANKRAGUA, AMENFI WEST MUNICIPALITY



REVENUE BOOTH ATTACHED TO THE MARKET AT ASANKRAGUA, AMENFI WEST MUNICIPALITY



LOCKABLE WAREHOUSE ATTACHED TO THE MARKET AT ASANKRAGUA, AMENFI WEST MUNICIPALITY



10-SEATER WC FACILITY ATTACHED TO THE MARKET AT ASANKRAGUA, AMENFI WEST MUNICIPALITY



LOCKABLE MARKET SHOPS AT AXIM, NZEMA EAST MUNICIPALITY